



OYS[★] 2030

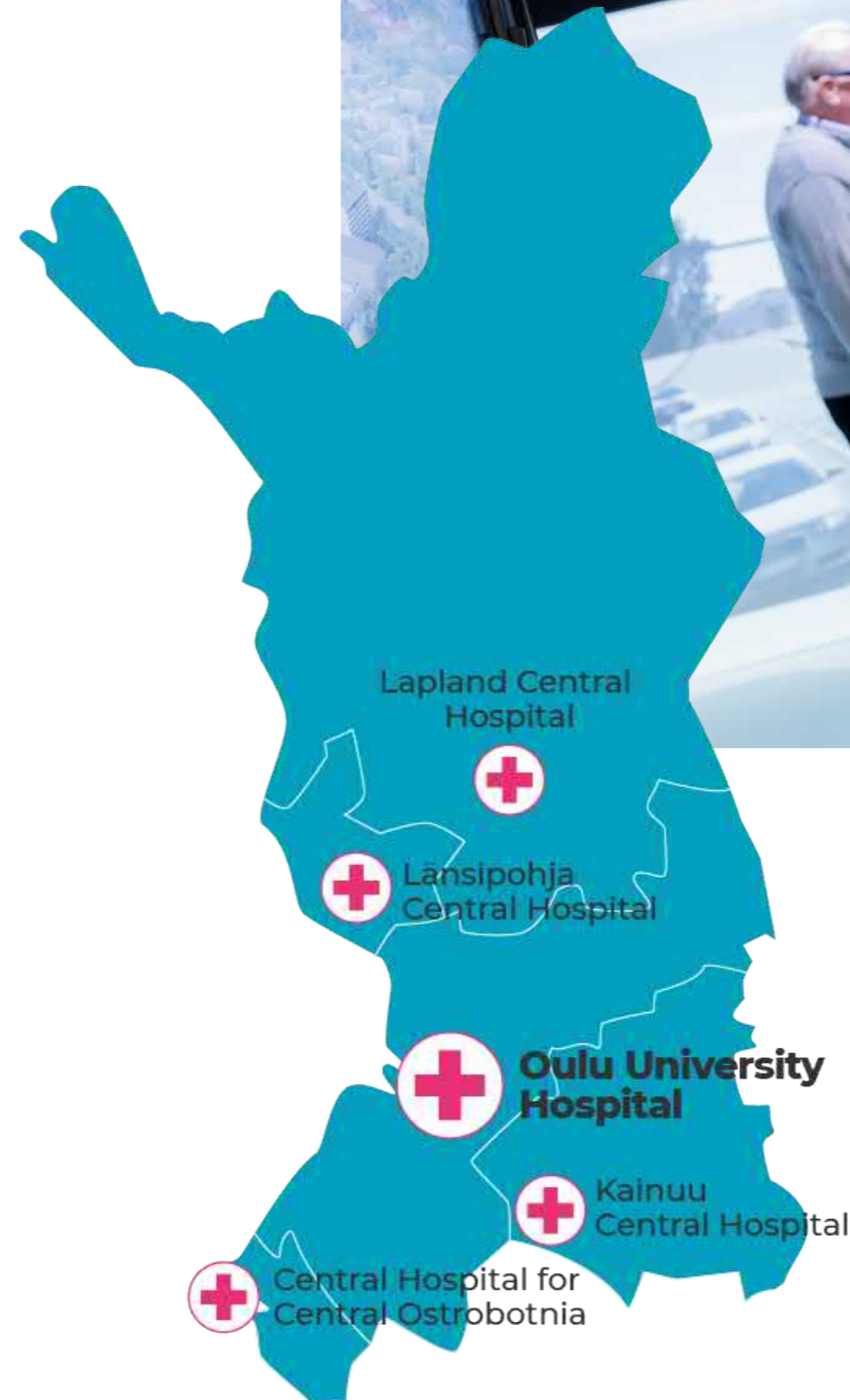
The smartest
hospital of
the world

Hospital for the half of Finland

Oulu University Hospital (OYS) is the center of the most demanding specialized healthcare in Northern Finland. We respond for the services of the specialized healthcare for nearly half million of Finnish people and for the services in the specific catchment area of almost 750 000 Finnish citizens for the specialized medical care.

Together with University of Oulu and the area's central hospitals, we educate a big part of the specialists of medicine for the needs of Northern Finland.

We are building a new hospital to be able to respond to the future needs of the specialized healthcare.



OYS 2030 - what is it about?

The current facilities of Oulu University Hospital were built between the years of 1968 and 1974 to respond to the needs of that time. The properties have reached the end of their lifecycle, and the facilities no longer respond to the requirements of the modern treatment or provide a good framework for optimizing the activities.

Northern Ostrobothnia Hospital District started on the council's decision in June 2012 the modernization program called The future's hospital OYS 2030, whose objective is apart from building new facilities also to modernize the hospital's operation models and structures and to develop the medical care's quality.

The observations made among others about the bad condition of the hospital buildings, which is even worse than presumed, and the experiences made with the already actualized transfers causing disadvantages and risks for the hospital operations, lead, however, to the reassessment of the plans and updating of the previous master plan. The council of the Northern Ostrobothnia Hospital District accepted the updated master plan in the summer of 2018.

Together with the extensive building project the whole building stock of Oulu University Hospital will be replaced by new buildings. The objective is to build safe, healthy and functional medical care facilities, with which the availability of the services of the specialized medical care will be secured in Northern Finland.

Programme in numbers

2012–2030

The modernization program was started based on the decision of the council of Northern Ostrobothnia Hospital District in 2012. The new hospital will be completed in stages within the next ten years.

Several subprojects

The new hospital will be built in stages. In the first stage, buildings A and B will be built and in the second stage, the buildings F and C will be completed. In addition to this, the facilities for radiation treatment and support services will be built in the area.

EUR 900 million

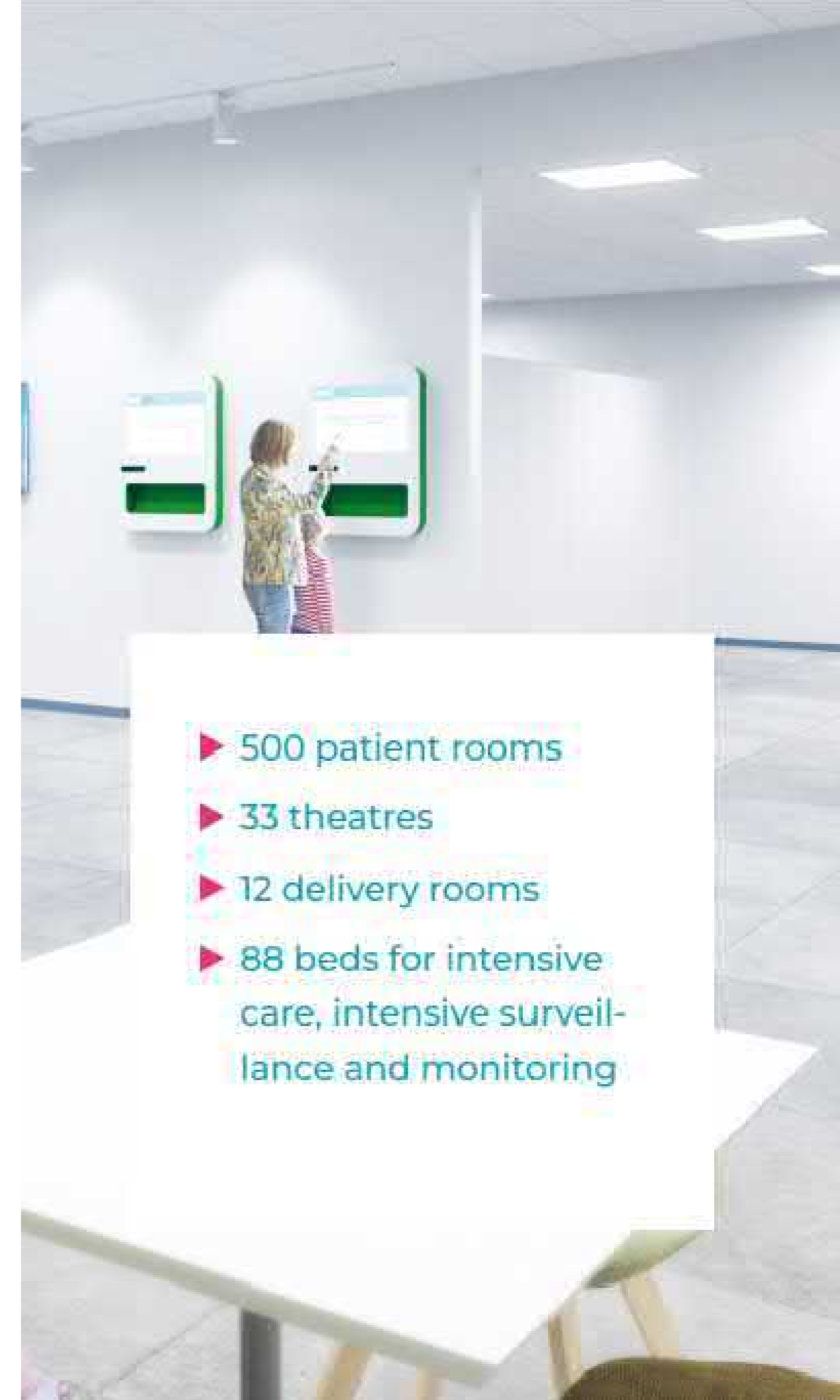
The total costs for the new building,s which will be built according to the modernization program, are about EUR 900 million.

10–15 %

By modernizing the operations and using new facility solutions, the goal is to improve the productivity of the hospital work by 10-15%.

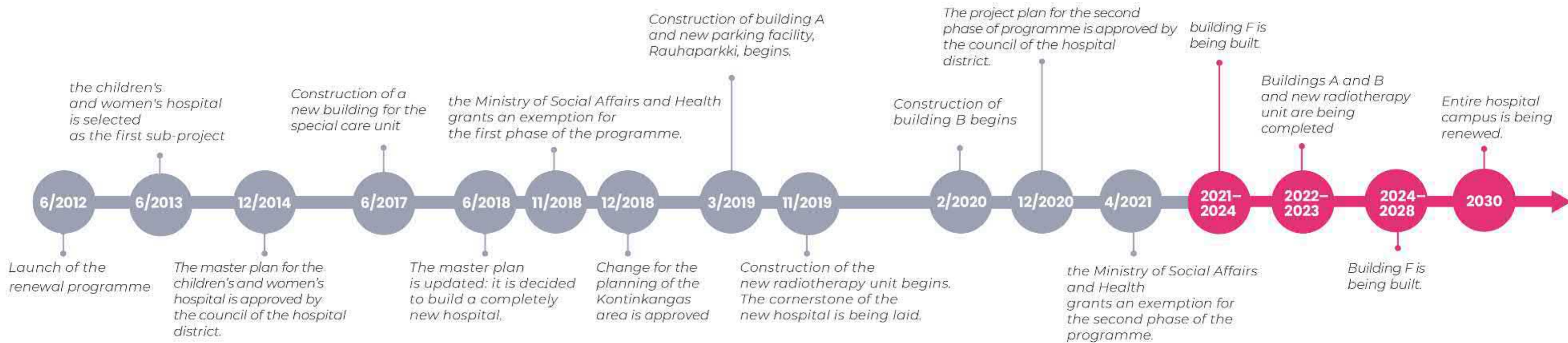
200 000 brm2

The new hospital complex will be approximately 10% smaller than the current one.



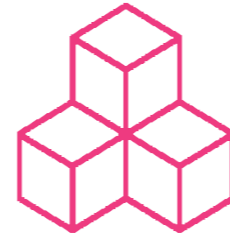
- ▶ 500 patient rooms
- ▶ 33 theatres
- ▶ 12 delivery rooms
- ▶ 88 beds for intensive care, intensive surveillance and monitoring

Timeline



The smartest hospital of the world

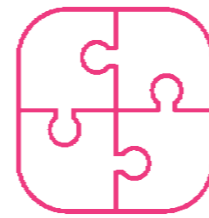
Our vision of change into “world’s smartest hospital” challenges strongly both the building of the new hospital and operations of University Hospital. OYS 2030 -program is not just about building new facilities - the operations of the hospital will be renewed, too.



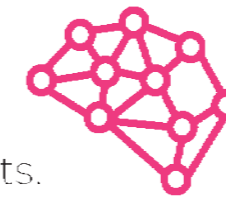
Smart adaptable facilities are unobstructed and promote the multi professional work by serving the needs of different user groups.



Smart technology makes the work of the medical staff more flexible and reduces unnecessary work stages and secures an individual treatment and information exchange between the players.



Learning organization develops its activities to exceed the boundaries between the units. The attitude is solution-based, cooperative and positive towards experiments.



Smart treatment paths are seamless and unobstructed for the patient by utilizing different means and channels.



We act emotionally and socially in a smart way. We meet both patients and their relatives and the whole working community empathically, comprehensively and individually.



Multidisciplinary top professionalism means that every employee’s knowledge is actively maintained. Knowledge will be centralized in a new way, and the professionals act as a team for the best of the patient.

Sub-projects

Building A: building was started in 2019 and will be brought to use in stages in 2024. Target budget EUR 264,5 million.

Building B: building was started in 2019 and will be brought to use in stages in 2024. Target budget EUR 375 million.

Building C: the building C is a part of the second phase of the modernization program. Building is scheduled to take place between 2024 and 2028.

**Building E
(radiation therapy unit):** building was started in the summer of 2020 and was taken in use in the autumn of 2022. Budget of the project was EUR 24,3 million.



Building F: Building was started in 2022 and will be completed estimated by 2025. Target budget EUR 197 million.

Patient hotel Patient hotel is under planning as a part of the new hospital.



The new hospital is planned activity-based

Before the facilities are going to be built or even before the plans end up on the tables of the architects, the activities of the new hospital will be planned in a close cooperation with the medical staff. User oriented planning has as a goal to promote the user contentment, improve treatment quality and safety and increase work productivity and efficiency.

The planning is based on the knowledge of the operation environment

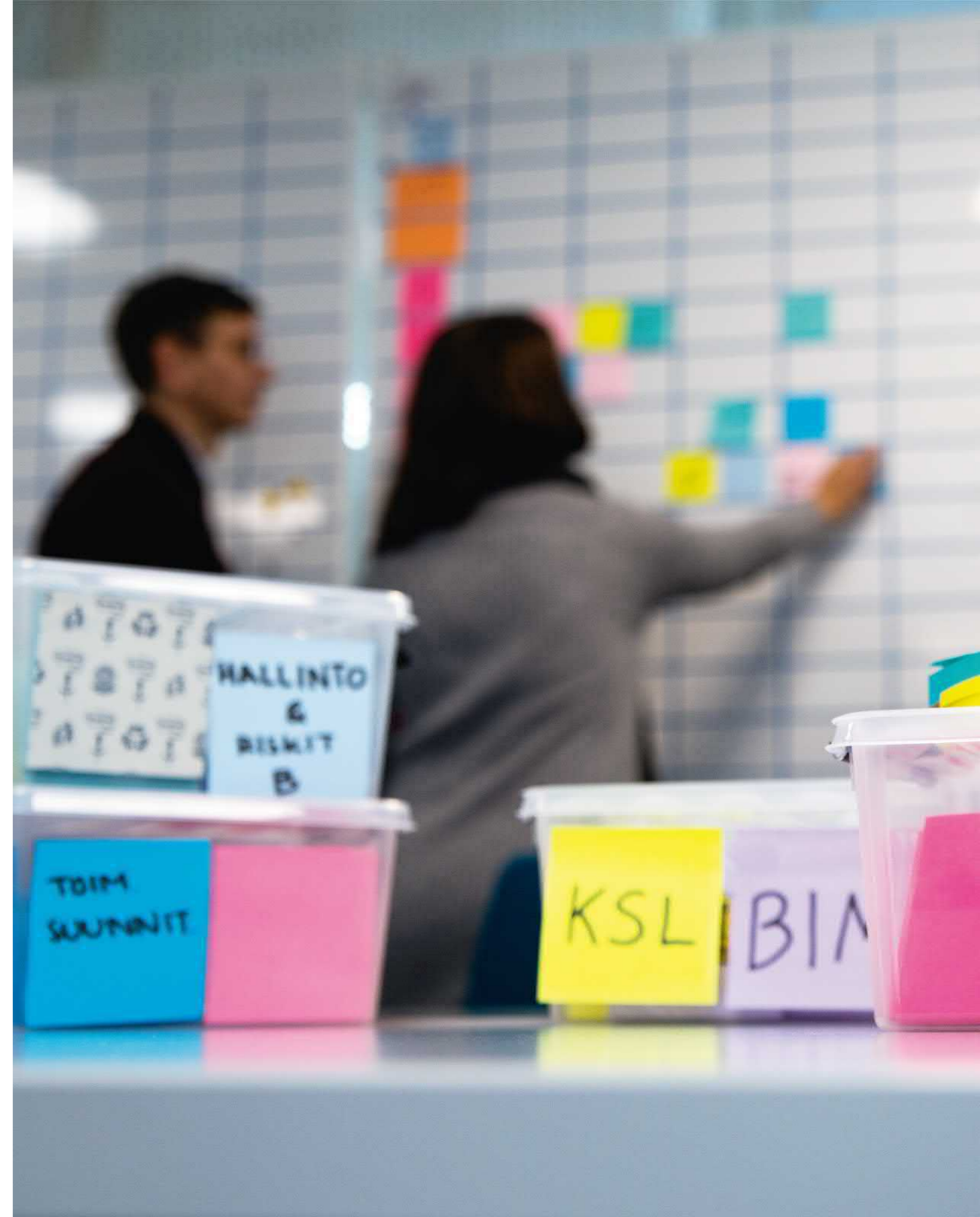
The requirement definition and measuring of the new facilities are based on the good knowledge of the hospital's operation models. Among others by analyzing the patient flows and the staff's moving, by comparing and observing the current and future process descriptions important information can be received to be used as a basis of facility planning.

Service design produces functional solutions

The planning of the new hospital utilizes the service design so that the activities of the hospital will be as seamless as possible from the point of view of the staff and patients.

The new hospital is built by using the alliance model

The new hospital will be built by using the cooperative realization form, the alliance model. In this model, the buyer, the planners and service providers form a joint project organization, in which both benefits and risks are taken together. In different subprojects of the modernization program there are three separate alliances, in which several different enterprises act as partners of the wellbeing county of North Ostrobothnia.



OYS[★]2030
MAAILMAN ÄLYKKÄIN SAIRAALA

www.oys2030.fi/en